

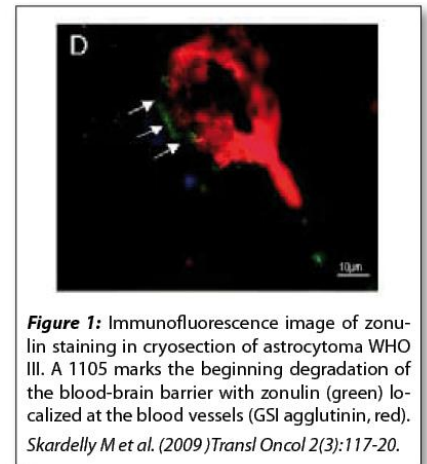


## Data Sheet

# HUMAN ZONULIN

## ANTIBODY, POLYCLONAL

<b>Catalog no.:</b>	A1105.1 / A1105.2
<b>Immunogen:</b>	Synthetic human intestinal Zonulin (aa 8-15) KLH-conjugated (GGVLVQPG)
<b>Host:</b>	Rabbit
<b>Matrix:</b>	Serum
<b>Specificity:</b>	Human intestinal Zonulin
<b>Contents:</b>	20 µl / 100 µl (lyophilized) Resuspend in 20 µl / 100 µl aqua bidest.
<b>Known applications:</b>	ELISA (1:1000), immunohistochemistry (paraffin sections, 1:300; cryosections) <sup>1,2</sup>  This antibody has not been tested for use in all applications. This does not necessarily exclude its use in non-tested procedures. The stated dilutions are recommendations only. End users should determine optimal dilutions in their system using appropriate negative/positive controls.
<b>Store at:</b>	2-8 °C (lyophilized); - 20 °C (dissolved)  Repeated thawing and freezing must be avoided
<b>References:</b>	1. Skardelly M, Armbruster FP, Meixensberger J, Hilbig H (2009) Expression of Zonulin, c-kit, and Glial Fibrillary Acidic Protein in Human Gliomas. <i>Transl Oncol</i> 2(3): 117-120. 2. Wex T, Monkemuller K, Kuester D, Fry L, Kandulski A, Malfertheiner P (2009). Zonulin is not increased in the cardiac and esophageal mucosa of patients with gastroesophageal reflux disease. <i>Peptides</i> 30(6): 1082-1087.
<b>Last updated on:</b>	16 March 2022



**Figure 1:** Immunofluorescence image of zonulin staining in cryosection of astrocytoma WHO III. A 1105 marks the beginning degradation of the blood-brain barrier with zonulin (green) localized at the blood vessels (GSI agglutinin, red). Skardelly M et al. (2009) *Transl Oncol* 2(3):117-20.

### For research use only

**Publishing research using A 1105? Please let us know so that we can cite your publication as a reference.**

