

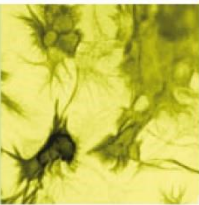
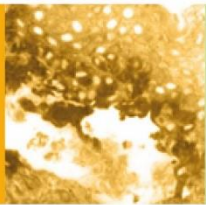
## Data Sheet

# HUMAN URODILATIN / CDD-ANP (aa 95-101)

## ANTIBODY, POLYCLONAL

<b>Catalog no.:</b>	A 8021.1 / A 8021.2
<b>Immunogen:</b>	Synthetic human Urodilatin / ANP (aa 95-101)- $\beta$ AC KLH conjugated (TAPRSLR)- $\beta$ AC
<b>Synonymys:</b>	CDD-ANP, Prepronatriodilatin
<b>Swiss-Prot No:</b>	P01160
<b>Gene Information:</b>	Gene Name: NPPA, ANP, PND GenelD: 4878
<b>Host:</b>	Rabbit
<b>Matrix:</b>	Serum
<b>Specificity:</b>	Synthetic human Urodilatin (aa 95-101), human Urodilatin There was no cross reactivity obtained with human ANP (aa 1-28) (< 0.1%), human proANP (aa 1-98) (< 0.1%), human proANP (aa 79-98) (< 0.1%), human BNP (< 0.1%), and human CNP (< 0.1%).
<b>Contents:</b>	20 $\mu$ l / 100 $\mu$ l (lyophilized) Resuspend in 20 $\mu$ l / 100 $\mu$ l aqua bidest.
<b>Known applications:</b>	RIA (1:3500) <sup>1,3,4,5,6</sup> , ELISA (1:1000)
<b>Store at:</b>	2-8 °C (lyophilized); - 20 °C (dissolved) Repeated thawing and freezing must be avoided
<b>References:</b>	<ol style="list-style-type: none"><li>1. Drummer C, Fiedler F, Konig A, Gerzer R (1991). Urodilatin, a kidney-derived natriuretic factor, is excreted with a circadian rhythm and is stimulated by saline infusion in man. <i>J Am Soc Nephrol</i> <b>1</b>(9): 1109-1113.</li><li>2. Meyer M, Armbruster FP, Maier I, Schwing J, Haller C, Missbichler A, Adermann K, Forssmann WG, Woloszczuk W (1998). Urinary and plasma urodilatin measured by a direct RIA using a highly specific antiserum. <i>Clin Chem</i> <b>44</b>(12): 2524-2529.</li><li>3. Mueck AO, Seeger H, Armbruster FP, Lippert TH (1998). The influence of norethisterone acetate on urinary urodilatin excretion in postmenopausal women. <i>Clin Exp Obstet Gynecol</i> <b>25</b>(3): 76-78.</li><li>4. Seeger H, Armbruster FP, Mueck AO, Lippert TH (1998). The effect of estradiol on urodilatin production in postmenopausal women. <i>Arch Gynecol Obstet</i> <b>262</b>(1-2): 65-68.</li><li>5. Lenz W, Herten M, Gerzer R, Drummer C (1999). Regulation of natriuretic peptide (urodilatin) release in a human kidney cell line. <i>Kidney Int</i> <b>55</b>(1): 91-99.</li></ol>





6. Heringlake M, Klaus S, Bahlmann L, Sehested J, Pagel H, Schmucker P (2001). Effects of posture and positive airway pressure on plasma atrial natriuretic peptide and renal urodilatin excretion. *Clin Nephrol* 56(5): 364-369.

**Last updated on:** 8 April 2022

**For research use only**

**Publishing research using A 8021? Please let us know so that we can cite your publication as a reference.**

