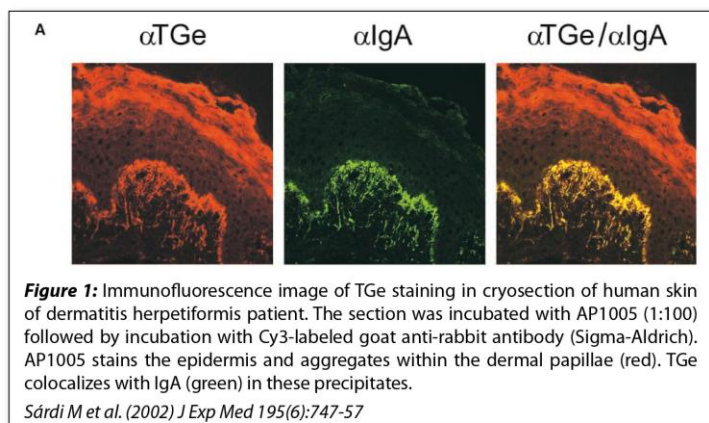
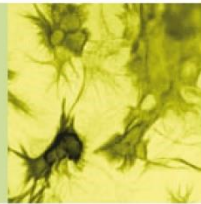
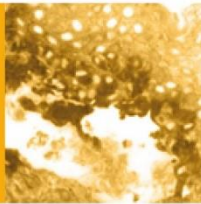


Data Sheet

HUMAN EPIDERMAL TRANSGLUTAMINASE (TGe) ANTIBODY, POLYCLONAL

Catalog no.:	AP1005.1 / AP1005.2
Immunogen:	Recombinant human epidermal Transglutaminase (TGe)
Synonyms:	Protein-glutamine gamma-glutamyltransferase E, EC=2.3.2.13, Transglutaminase E, Transglutaminase-3
Swiss-Prot No:	Q08188
Gene Information:	Gene Name: TGM3 GenelD: 7053
Host:	Rabbit
Matrix:	Serum
Specificity:	Human Epidermal Transglutaminase (TGe) There was no crossreactivity obtained with human Transglutaminase-1 or factor XIIIa. Crossreactivity with Transglutaminase-2 was <1%.
Contents:	20 µl / 100 µl (lyophilized) Resuspend in 20 µl / 100 µl aqua bidest.
Known applications:	ELISA ¹ , immunohistochemistry (cryosections, 1:100-3200) ^{1,2,3} This antibody has not been tested for use in all applications. This does not necessarily exclude its use in non-tested procedures. The stated dilutions are recommendations only. End users should determine optimal dilutions in their system using appropriate negative/positive controls.





Store at: 2-8 °C (lyophilized); -20 °C (dissolved)

Repeated thawing and freezing must be avoided

References:

1. Sardy M, Karpati S, Merkl B, Paulsson M, Smyth N (2002). Epidermal transglutaminase (TGase 3) is the autoantigen of dermatitis herpetiformis. *J Exp Med* **195**(6): 747-757.
2. Oji V, Hautier JM, Ahvazi B, Hausser I, Aufenvenne K, Walker T, Seller N, Steijlen PM, Küster W, Hovnanian A, Hennies HC, Traupe H (2006). Bathing suit ichthyosis is caused by transglutaminase-1 deficiency: evidence for a temperature-sensitive phenotype. *Human Molecular Genetics* **15**(21): 3083-3097.
3. Cannistraci C, Lesnoni La Parola I, Cardinali G, Bolasco G, Aspite N, Stigliano V & Picardo M (2007). Co-localization of IgA and TG3 on healthy skin of coeliac patients. *J. Eur. Acad. Dermatol. Venereol.* **21**: 509-14.

Last updated on: 27 April 2022

For research use only

Publishing research using AP1005? Please let us know so that we can cite your publication as a reference.

