

Data Sheet

HUMAN TIP 39

ANTIBODY, POLYCLONAL

Catalog no.:	A 1050.1 / A 1050.2
Immunogen:	Synthetic human TIP 39 (aa 62-100) KLH-conjugated (SLALADDAAFRERARLLAALERRHWLNSYMHKLLVLDAP)
Synonyms:	Tuberoinfundibular peptide of 39 residues, Parathyroid hormone 2
Swiss-Prot No:	Q96A98
Gene Information:	Gene Name: PTH2, TIP39, TIPF39 GenelD: 113091
Host:	Rabbit
Matrix:	Serum
Specificity:	Human, bovine, and canine TIP 39
Contents:	20 µl / 100 µl (lyophilized) Resuspend in 20 µl / 100 µl aqua bidest.
Known applications:	ELISA (1:4000), RIA (1:2000), immunohistochemistry (paraffin sections, 1:100)
	This antibody has not been tested for use in all applications. This does not necessarily exclude its use for non-tested procedures. The stated dilutions are recommendations only. We suggest that the applicant titrates the antibody in his/her system using appropriate negative/positive controls.
Store at:	2-8 °C (lyophilized); - 20 °C (dissolved) Repeated thawing and freezing must be avoided
Last updated on:	16 March 2022

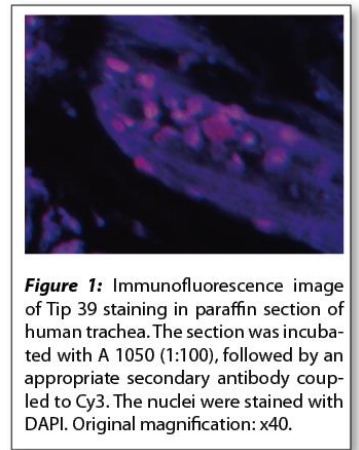


Figure 1: Immunofluorescence image of Tip 39 staining in paraffin section of human trachea. The section was incubated with A 1050 (1:100), followed by an appropriate secondary antibody coupled to Cy3. The nuclei were stained with DAPI. Original magnification: x40.

For research use only

Publishing research using A 1050? Please let us know so that we can cite your publication as a reference.

