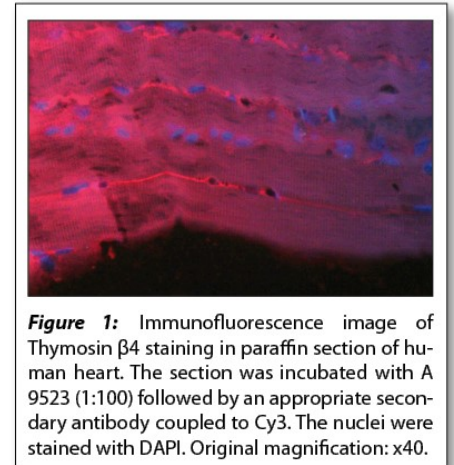


## Data Sheet

# HUMAN THYMOSIN $\beta$ 4 (aa 1-11)

## ANTIBODY, POLYCLONAL

<b>Catalog no.:</b>	A 9523.1 / A 9523.2
<b>Immunogen:</b>	Synthetic human Thymosin $\beta$ 4 (aa 1-11) KLH conjugated (AcSDKPDMAEIEK)
<b>Synonyms:</b>	T beta-4, Fx
<b>Swiss-Prot No:</b>	P62328
<b>Gene Information:</b>	Gene name: TMSB4X, TB4X, THYB4, TMSB4 GenelD: 7114
<b>Host:</b>	Rabbit
<b>Matrix:</b>	Serum
<b>Specificity:</b>	Human Thymosin $\beta$ 4 (aa 1-11), human and mouse Thymosin $\beta$ 4 There was no cross reactivity obtained with human Thymosin $\beta$ 9.
<b>Contents:</b>	20 $\mu$ l / 100 $\mu$ l (lyophilized) Resuspend in 20 $\mu$ l / 100 $\mu$ l aqua bidest.
<b>Known applications:</b>	ELISA (1:1000), immunohistochemistry (paraffin sections, 1:100-1000; cryosections)  This antibody has not been tested for use in all applications. This does not necessarily exclude its use in non-tested procedures. The stated dilutions are recommendations only. End users should determine optimal dilutions in their system using appropriate negative/positive controls.
<b>Store at:</b>	2-8 $^{\circ}$ C (lyophilized); - 20 $^{\circ}$ C (dissolved) Repeated thawing and freezing must be avoided
<b>References:</b>	1. Livaniou E, Mihelic M, Evangelatos GP, Haritos A, Voelter W (1992). A thymosin beta 4 ELISA using an antibody against the N terminal fragment thymosin beta 4 [1-14]. <i>J Immunol Methods</i> <b>148</b> (1-2): 9-14.
<b>Last updated on:</b>	24 February 2025



**Figure 1:** Immunofluorescence image of Thymosin  $\beta$ 4 staining in paraffin section of human heart. The section was incubated with A 9523 (1:100) followed by an appropriate secondary antibody coupled to Cy3. The nuclei were stained with DAPI. Original magnification: x40.

### For research use only

**Publishing research using A 9523? Please let us know so that we can cite your publication as a reference.**

