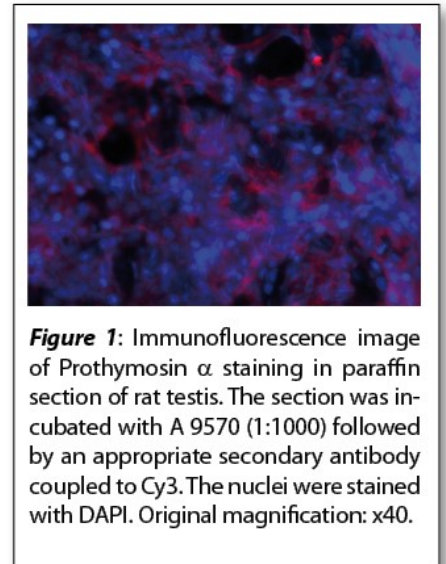


## Data Sheet

# HUMAN PROTHYMOSIN $\alpha$ (aa 103-111)

## ANTIBODY, POLYCLONAL

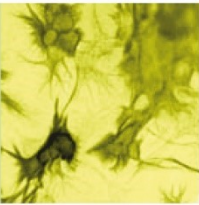
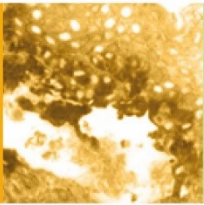
<b>Catalog no.:</b>	A 9570.1 / A 9570.2
<b>Immunogen:</b>	Synthetic human Prothymosin $\alpha$ (aa 103-111) KLH conjugated (KKQKTDEDD)
<b>Swiss-Prot No:</b>	P06454
<b>Gene Information:</b>	Gene Name: PTMA, TMSA GenelD: 5757
<b>Host:</b>	Rabbit
<b>Matrix:</b>	Serum
<b>Specificity:</b>	Human Prothymosin $\alpha$ (aa 103-111), human and rat Prothymosin $\alpha$  There was no cross reactivity obtained with human Prothymosin $\alpha$ (aa 1-28) or human Parathymosin $\alpha$ .
<b>Contents:</b>	20 $\mu$ l / 100 $\mu$ l (lyophilized)  Resuspend in 20 $\mu$ l / 100 $\mu$ l aqua bidest.
<b>Known applications:</b>	ELISA (1:3000) <sup>1,2</sup> , immunohistochemistry (paraffin sections, 1:100-1000) <sup>1</sup>  This antibody has not been tested for use in all applications. This does not necessarily exclude its use for non-tested procedures. The stated dilutions are recommendations only. We suggest that the applicant titrates the antibody in his/her system using appropriate negative/positive controls.
<b>Store at:</b>	2-8 °C (lyophilized); - 20 °C (dissolved)  Repeated thawing and freezing must be avoided
<b>References:</b>	1. Costopoulou D, Livaniou E, Leondiadis L, Apostolikas N, Czarnecki J, Ithakissios D, Evangelatos GP (1997). Development of an antiserum against the C-terminal fragment [101-109] of prothymosin alpha and its potential application to ELISA direct serum measurements and to immunohistochemical studies. <i>Int J Thymol</i> <b>5</b> :437-42.  2. Costopoulou D, Leondiadis L, Czarnecki J, Ferderigos N, Ithakissios DS, Livaniou E, Evangelatos GP (1998). Direct ELISA method for the specific determination of prothymosin alpha in human specimens. <i>J Immunoassay</i> <b>19</b> :295-316.
<b>Last updated on:</b>	15 December 2022



**Figure 1:** Immunofluorescence image of Prothymosin  $\alpha$  staining in paraffin section of rat testis. The section was incubated with A 9570 (1:1000) followed by an appropriate secondary antibody coupled to Cy3. The nuclei were stained with DAPI. Original magnification: x40.



Antibodies



**For research use only**

**Publishing research using A 9570? Please let us know so that we can cite your publication as a reference.**



**Immundiagnostik AG**

Stubenwald-Allee 8a · 64625 Bensheim · Germany

Phone: +49 6251 70190-0 · Fax: +49 6251 70190-363 · dept.immunochemicals@immundiagnostik.com · www.immundiagnostik.com