



## Data Sheet

# HUMAN RELAXIN-2

## ANTIBODY, POLYCLONAL

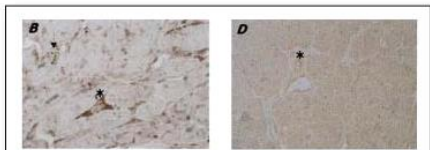
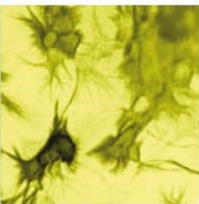
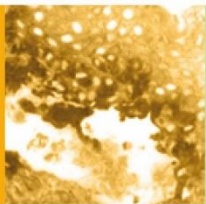
<b>Catalog no.:</b>	A 9211.1 / A 9211.2
<b>Immunogen:</b>	Purified human Relaxin-2
<b>Swiss-Prot No:</b>	P04090
<b>Gene Information:</b>	Gene Name: RLN2 GenelD: 6019
<b>Host:</b>	Rabbit
<b>Matrix :</b>	Serum
<b>Specificity:</b>	Human Relaxin-1 and Relaxin-2, pro-Relaxin-1 and pro-Relaxin-2. No cross reactivity was obtained with the following proteins: Insulin, Zn-Insulin, IGF-1, IGF-2, Spermolaxin, Inhibin $\alpha$ -subunit, Inhibin, Seminal-Plasma-Inhibin-like peptide, CG, LH, FSH, Prolactin and Ubiquitin.
<b>Contents:</b>	20 $\mu$ l / 100 $\mu$ l (lyophilized) Resuspend in 20 $\mu$ l / 100 $\mu$ l aqua bidest.
<b>Known applications:</b>	RIA (1:15 000) <sup>1,3</sup> , ELISA (1:5000) <sup>2,4,5</sup> , immunohistochemistry (paraffin sections, 1:300; cryosections) <sup>4,6,8,9</sup> , Western Blot (1:200) <sup>4,7</sup> , immunoprecipitation <sup>7</sup>  This antibody has not been tested for use in all applications. This does not necessarily exclude its use in non-tested procedures. The stated dilutions are recommendations only. End users should determine optimal dilutions in their system using appropriate negative/positive controls.
<b>Store at:</b>	2-8 °C (lyophilized); - 20 °C (dissolved) Repeated thawing and freezing must be avoided

H1 H1 H2 H2 ← 6 kDa  
Positive control

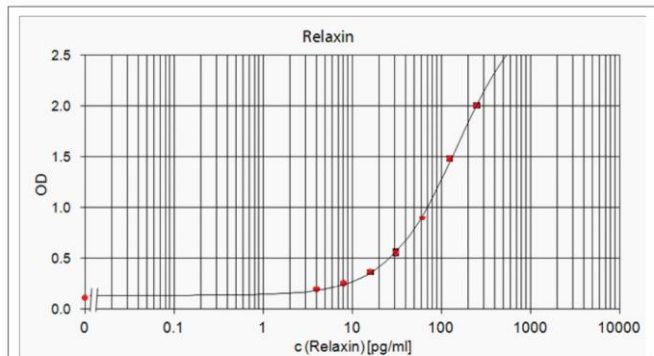
**Figure 1:** Immuno Blot analysis of Relaxin. Synthetic H1 (100 ng) and recombinant H2 (500 ng) Relaxin were separated by SDS-PAGE and immunoblotted with A 9211 (1:200).

*Dschietzig T et al. (2001) FASEB Vol 15:2187-95*





**Figure 2:** Immunohistochemistry image of Relaxin staining in paraffin sections of left ventricular tissue from a patient demonstrating dilated cardiomyopathy. The section was incubated with A 9211 (1:300) for 24h. DAB was used as the chromogen. The section was counterstained with hematoxylin and eosin. **B.** A 9211 stains myocytes (not shown) and interstitial cells (asterisk) of the myocardium. **D.** Control section incubated with serum from nonimmunized rabbit  
*Dschietzig T et al. (2001) FASEB Vol 15:2187-95*



**Figure 3:** ELISA standard curve showing measurement of human Relaxin in a sandwich immunoassay using A 9211 as detection antibody. OD was determined at 450 nm. The shown standard curve is for demonstration purposes only and can be influenced by buffer, incubation conditions or dilution of the conjugate.

## References:

1. Meisenbach M, Armbruster FP, Becker S, Grön HJ, Grübler T, Lippert TH, Paulus G, and Völter W (1995). Development and characterization of antibodies specific for human relaxin 2 (hRLX-2). In PTP. Kaumaya, RS. Hodges (Eds.) *Peptides. Chemistry, Structure and Biology (Proceedings of the 14th American Peptide Symposium)* Mayflower Scientific Ltd. England.
2. Armbruster FP, Maier I, Grön HJ et al. (2000). A highly sensitive homologous human relaxin ELISA. In GW.Tregear et al (eds.) *Relaxin 2000: Proceedings of the third International Conference on Relaxin & Related Peptides*, p 273-274.
3. Armbruster FP, Grön HJ, Maier I, Becker S, Bailer SM, Lippert TH, Seeger H, Kloppinger M, Tampe J, Stoeva S, Voelter W (2001). A sensitive homologous radioimmunoassay for human relaxin-2 (h-RLX-2) based on antibodies characterized by epitope mapping studies. *Eur J Med Res* **6**(1): 1-9.
4. Dschietzig T, Richter C, Bartsch C, Laule M, Armbruster FP, Baumann G, Stangl K. (2001). The pregnancy hormone relaxin is a player in human heart failure. *FASEB Journal* **15**:2187-95.
5. Vogel I, Glavind-Kristensen M, Thorsen P, Armbruster FP, Ulbjerg N (2002). S-relaxin as a predictor of preterm delivery in women with symptoms of preterm labour. *BJOG* **109**(9): 977-982.
6. Galey S, Konieczko EM, Arnold CA, Cooney TE (2003). Immunohistological detection of relaxin binding to anterior cruciate ligaments. *Orthopedics* **26**(12): 1201-1204.
7. Dschietzig T, Bartsch C, Greinwald M, Baumann G, Stangl K (2005). The pregnancy hormone relaxin binds to and activates the human glucocorticoid receptor. *Ann N Y Acad Sci* **1041**: 256-271.
8. Shirota K, Tateishi K, Koji T, Hishikawa Y, Hachisuga T, Kuroki M, Kawarabayashi T (2005). Early Human Preantral Follicles Have Relaxin and Relaxin Receptor (LGR7), and Relaxin Promotes Their Development. *J Clin Endocrinol Metab* **90**(1): 516-521.
9. Lubahn J, Ivance D, Konieczko E, Cooney T (2006) Immunohistochemical detection of relaxin binding to the volar oblique ligament. *J Hand Surg Am* **31**(1): 80-84.

**Last updated on:** 13 April 2022

**For research use only**

**Publishing research using A 9211? Please let us know so that we can cite your publication as a reference.**

