

Data Sheet

HUMAN PARATHYROID HORMONE-RELATED PEPTIDE [PTHrP] (aa 53-86)

ANTIBODY, POLYCLONAL

Catalog no.:	A 1118.3 / A 1118.4
Immunogen:	Synthetic human PTHrP (aa 53-86) KLH-conjugated (KNHPVRFSGSDDEGRYLQETNKVETYKEQPLKTP)
Synonyms:	Parathyroid hormone-like protein (PLP)
Swiss-Prot No:	P12272
Gene Information:	Gene Name: PTHLH, PTHRP GenelD: 5744
Host:	Goat
Matrix:	IgG, Protein G purified from serum; PBS pH 7.4, 20 mM D-(+)-trehalose dihydrate, 40 mM D-(-)-mannitol
Specificity:	Human PTHrP (aa 53-86; 1-86)
Contents:	10 µg / 100 µg (lyophilized) Resuspend in 10 µl / 100 µl aqua bidest.
Known applications:	RIA ¹

This antibody has not been tested for use in all applications. This does not necessarily exclude its use in non-tested procedures. The stated dilutions are recommendations only. End users should determine optimal dilutions/concentrations in their system using appropriate negative/positive controls.

Store at:	2-8 °C (lyophilized); - 20 °C (dissolved) Repeated thawing and freezing must be avoided
------------------	--

References:	1. Blind E, Raue F, Gotzmann J, Schmidt-Gayk H, Kohl B, Ziegler R (1992). Circulating levels of midregional parathyroid hormone-related protein in hypercalcaemia of malignancy. <i>Clin Endocrinol (Oxf)</i> 37 (3): 290-297.
--------------------	---

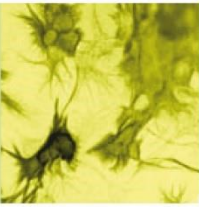
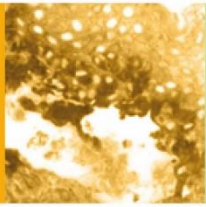
Last updated on:	13 March 2025
-------------------------	---------------

For research use only

Publishing research using A 1118? Please let us know so that we can cite your publication as a reference.



Antibodies



Immundiagnostik AG

Stubenwald-Allee 8a · 64625 Bensheim · Germany

Phone: +49 6251 70190-0 · Fax: +49 6251 70190-363 · dept.immunochemicals@immundiagnostik.com · www.immundiagnostik.com