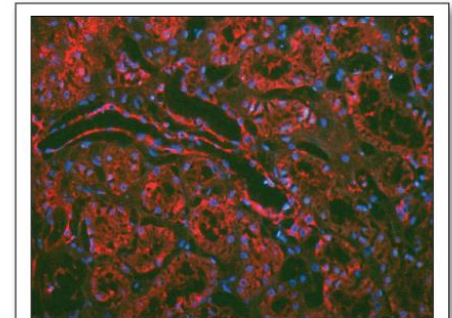


## Data Sheet

# HUMAN PARATHYROID HORMONE-RELATED PEPTIDE [PTHrP] (aa 107-111)

## ANTIBODY, POLYCLONAL

<b>Catalog no.:</b>	A 4241.1 / A 4241.2
<b>Immunogen:</b>	Synthetic human PTHrP (107-111) KLH-conjugated (TRSAW)
<b>Synonyms:</b>	Parathyroid hormone-like protein (PLP), Osteostatin
<b>Swiss-Prot No:</b>	P12272
<b>Gene Information</b>	Gene name: PTHLH, PTHRP GeneID: 5744
<b>Host:</b>	Rabbit
<b>Matrix:</b>	Serum
<b>Specificity:</b>	Human PTHrP (aa 107-111)
<b>Contents:</b>	20 µl / 100 µl (lyophilized) Resuspend in 20 µl / 100 µl aqua bidest.
<b>Known applications:</b>	ELISA (1:5000), immunohistochemistry (paraffin sections, 1:100)
<b>Store at:</b>	2-8 °C (lyophilized); - 20 °C (dissolved) Repeated thawing and freezing must be avoided
<b>Last updated on:</b>	06 April 2022



**Figure 1:** Immunofluorescence image of PTHrP staining in paraffin section of human kidney. The section was incubated with A 4241 (1:100), followed by an appropriate secondary antibody coupled to Cy3. The nuclei were stained with DAPI. A 4241 stains renal vessels and tubules. Original magnification: x20.

### For research use only

**Publishing research using A 4241? Please let us know so that we can cite your publication as a reference.**

