

Data Sheet

MOUSE NIDOGEN 2

ANTIBODY, POLYCLONAL

Catalog no.:	AP1004.1 / AP1004.2
Immunogen:	Recombinant mouse Nidogen 2
Synonyms:	Entactin-2
Swiss-Prot No:	O88322
Gene Information:	Gene name: Nid2 GenelD: 18074
Host:	Rabbit
Matrix:	Serum
Specificity:	Mouse Nidogen 2
Contents:	20 µl / 100 µl (lyophilized) Resuspend in 20 µl / 100 µl aqua bidest.
Known applications:	ELISA (1:5000-16 000) ^{1,2} , RIA ^{1,2,3} , Western Blot (1:400-1000) ^{3,4,5} , immunohistochemistry (paraffin sections; cryosections, 4 -10 µg/ml antigen affinity-purified antibody) ^{1,2,3,4}

This antibody has not been tested for use in all applications. This does not necessarily exclude its use in non-tested procedures. The stated dilutions are recommendations only. End users should determine optimal dilutions in their system using appropriate negative/positive controls.

Store at: 2-8 °C (lyophilized); - 20 °C (dissolved)

Repeated thawing and freezing must be avoided

Reference List:

- Kohfeldt E, Sasaki T, Gohring W, Timpl R (1998). Nidogen-2: a new basement membrane protein with diverse binding properties. *J Mol Biol* **282**:99-109.
- Salmivirta K, Talts JF, Olsson M, Sasaki T, Timpl R, Ekblom P (2002). Binding of mouse nidogen-2 to basement membrane components and cells and its expression in embryonic and adult tissues suggest complementary functions of the two nidogens. *Exp Cell Res* **279**:188-201.
- Schymeinsky J, Nedbal S, Miosge N, Poschl E, Rao C, Beier DR, Skarnes WC, Timpl R, Bader BL (2002). Gene structure and functional analysis of the mouse nidogen-2 gene: nidogen-2 is not essential for basement membrane formation in mice. *Mol Cell Biol* **22**(19): 6820-6830.
- Kunze A, Abari E, Semkova I, Paulsson M, Hartmann U (2010). Deposition of nidogens and other basement membrane proteins in the young and aging mouse retina. *Ophthalmic Res* **43**(2): 108-112.

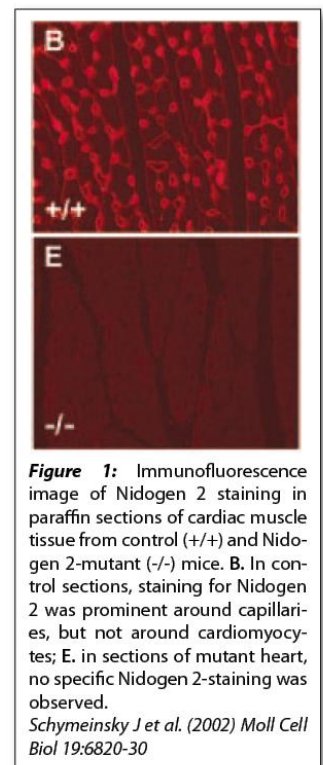
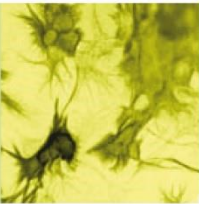
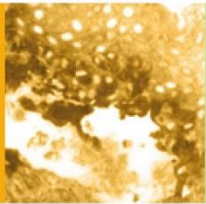


Figure 1: Immunofluorescence image of Nidogen 2 staining in paraffin sections of cardiac muscle tissue from control (+/+) and Nidogen 2-mutant (-/-) mice. **B.** In control sections, staining for Nidogen 2 was prominent around capillaries, but not around cardiomyocytes; **E.** in sections of mutant heart, no specific Nidogen 2-staining was observed. Schymeinsky J et al. (2002) *Moll Cell Biol* **19**:6820-30





5. Lutter S, Xie S, Tatin F, Makinen T (2012). Smooth muscle-endothelial cell communication activates Reelin signaling and regulates lymphatic vessel formation. *J Cell Biol* **197**(6): 837-849.

Last updated on: 27 April 2022

For research use only

Publishing research using AP1004? Please let us know so that we can cite your publication as a reference.

