

Data Sheet

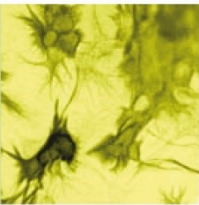
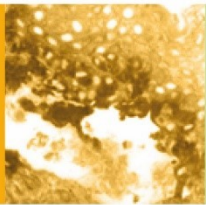
BOVINE LUTEINIZING HORMONE [LH]

ANTIBODY, POLYCLONAL

Catalog no.:	AS1001.1/AS1001.2
Immunogen:	Bovine Luteinizing Hormone
Synonyms:	Lutropin, heterodimer of Glycoprotein hormones alpha chain and Lutropin subunit beta
Swiss-Prot No:	P01217 and P04651
Gene Information:	Gene Name: CGA and LHB GeneID: 280749 and 280839
Host:	Rabbit
Matrix:	Serum
Specificity:	Bovine, human, sheep, goat, deer LH No cross reactivity was obtained with other pituitary hormones.
Contents:	20 µl / 100 µl (lyophilized) Resuspend in 20 µl / 100 µl aqua bidest.
Known applications:	RIA (1: 500 000) ^{1,2,3,4,5} , EIA (1:400 000- 800 000) ⁴ , immunohistochemistry This antibody has not been tested for use in all applications. This does not necessarily exclude its use for non-tested procedures. The stated dilutions are recommendations only. We suggest that the applicant titrates the antibody in his/her system using appropriate negative/positive controls.
Store at:	2-8 °C (lyophilized); - 20 °C (dissolved) Repeated thawing and freezing must be avoided
References:	<ol style="list-style-type: none">Schams D, Barth D, Karg H (1980). LH, FSH and progesterone concentrations in peripheral plasma of the female roe deer (<i>Capreolus capreolus</i>) during the rutting season. <i>J Reprod Fertil</i> 60(1): 109-114.Walters DL, Schams D, Schallenberger E (1984). Pulsatile secretion of gonadotrophins, ovarian steroids and ovarian oxytocin during the luteal phase of the oestrous cycle in the cow. <i>J Reprod Fertil</i> 71(2): 479-491.Lahlou-Kassi A, Schams D, Glatzel P (1984). Plasma gonadotrophin concentrations during the oestrous cycle and after ovariectomy in two breeds of sheep with low and high fecundity. <i>J Reprod Fertil</i> 70(1): 165-173.Mutayoba BM, Meyer HH, Schams D, Schallenberger E (1990). Development of a sensitive enzyme immunoassay for LH determination in bovine plasma using the streptavidin-biotin technique. <i>Acta Endocrinol (Copenh)</i> 122(2): 227-232.Bubenik GA, Brown RD, Schams D, Bartos L (1999). The effect of ACTH on the GnRH-induced release of LH and testosterone in male white-tailed deer. <i>Comp Biochem Physiol C Pharmacol Toxicol Endocrinol</i> 122(2): 173-179.
Last updated on:	19 January 2023



Antibodies



For research use only

Publishing research using AS1001? Please let us know so that we can cite your publication as a reference.



Immundiagnostik AG

Stubenwald-Allee 8a · 64625 Bensheim · Germany

Phone: +49 6251 70190-0 · Fax: +49 6251 70190-363 · dept.immunochemicals@immundiagnostik.com · www.immundiagnostik.com