

Data Sheet

HUMAN LAMININ 5

ANTIBODY, MONOCLONAL

Catalog no.:	AP1008.1 / AP1008.2
Immunogen:	Human Laminin 5 beta 3 chain
Synonyms:	Laminin-5 subunit beta, Epiligrin subunit beta, Kalinin subunit beta, Nicein subunit beta, Laminin B1k chain, Kalinin B1 chain
Swiss-Prot No:	Q13751
Gene Information:	Gene Name: LAMB3, LAMB1 Gene ID: 3914
Host:	Mouse Balb/c
Clone no.:	6F12
Isotype:	IgG
Matrix:	Cell culture supernatant, Protein A purified, PBS pH 7.4
Specificity:	Human Laminin 5, rat Laminin 5
Contents:	10 µg / 100 µg (lyophilized) Resuspend in aqua bidest.
Known applications:	Western Blot ¹ , ELISA (secondary antibody in sandwich ELISA) ^{3, 5} , immunohistochemistry (cryosections) ^{2, 4, 6}
	This antibody has not been tested for use in all applications. This does not necessarily exclude its use in non-tested procedures. The stated dilutions are recommendations only. End users should determine optimal dilutions in their system using appropriate negative/positive controls.
Store at:	2-8 °C (lyophilized); - 20 °C (dissolved) Repeated thawing and freezing must be avoided
References:	<ol style="list-style-type: none"> 1. Marinkovich MP, Lunstrum GP, Burgeson RE (1992). The anchoring filament protein kalinin is synthesized and secreted as a high molecular weight precursor. <i>J Biol Chem</i> 267(25): 17900-17906. 2. Sasaki T, Amano S, Nishiyama T, Nakayama Y, Burgeson RE, Nakajima H (1998). Expression of laminin 5, and collagen IV and VII in bullous pemphigoid skin. <i>Arch Dermatol Res</i> 290(5): 283-285. 3. Amano S, Nishiyama T, Burgeson RE (1999). A specific and sensitive ELISA for laminin 5. <i>J Immunol Methods</i> 224(1-2): 161-169.

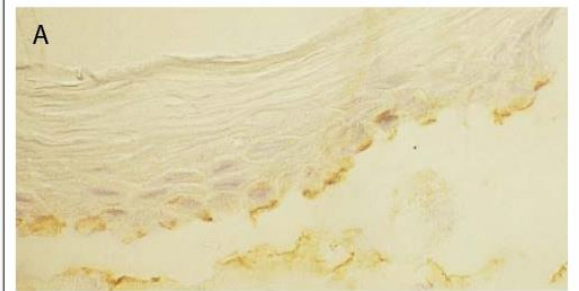
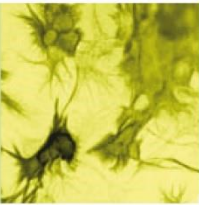
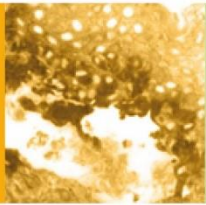


Figure 1: Immunohistochemistry image of Laminin 5 staining in cryosection of bullous pemphigoid skin. The section was incubated with AP1008 and detected using avidin biotin peroxidase complex (ABC) method. **A.** AP1008 stains roof and base of bullous pemphigoid blisters.

Sasaki T et al. (1998) *Arch Dermatol Res* 290:283-85





4. Libby RT, Champlaud M-F, Claudepierre T, Xu Y, Gibbons EP, Koch M, Burgeson RE, Hunter DD, Brunken WJ (2000). Laminin Expression in Adult and Developing Retinae: Evidence of Two Novel CNS Laminins. *The Journal of Neuroscience* **20**(17): 6517-6528.

5. Amano S, Akutsu N, Ogura Y, Nishiyama T (2004.) Increase of laminin 5 synthesis in human keratinocytes by acute wound fluid, inflammatory cytokines and growth factors, and lysophospholipids. *Br J Dermatol* **151**(5): 961-970.

6. Drumea-Mirancea M, Wessels JT, Müller CA, Essl M, Eble JA, Tolosa E, Koch M, Reinhardt DP, Sixt M, Sorokin L, Stierhof Y-D, Schwarz H, Klein G (2006). Characterization of a conduit system containing laminin-5 in the human thymus: a potential transport system for small molecules. *Journal of Cell Science* **119**(7): 1396-1405

Last updated on: 27 April 2022

For research use only

Publishing research using AP1008? Please let us know so that we can cite your publication as a reference.

