



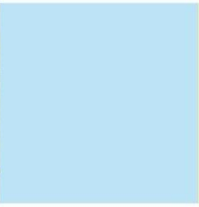
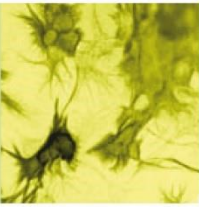
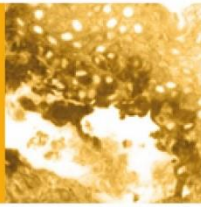
Data Sheet

HEPARAN SULFATE-PROTEOGLYCAN

ANTIBODY, MONOCLONAL

Catalog no.:	AH1001.1 / AH1001.2
Immunogen:	Purified human small basement membrane heparan sulfate proteoglycan (HS-PG)
Host:	Mouse Balb/c
Clone no.:	1F10/B8
Isotype:	IgG ₁ kappa
Matrix:	Cell culture supernatant, Protein G purified, 50 mM TRIS pH 7.4
Specificity:	<p>Monoclonal Ab 1F10/B8 is specific for a core protein epitope of a human small basement membrane heparan sulfate proteoglycan (HS-PG). MAb 1F10/B8 recognizes an epitope different from that recognized by mAb 2H7/G11 and mAb 2E2/B5. Whereas previously perlecan was the only known basement membrane HS-PG, there is now evidence that at least two other basement membrane HS-PG exist: Agrin, originally discovered as an important component of the neuromuscular junction, and a novel small HS-PG which was isolated from human aorta and kidney. This HS-PG, with a molecular weight of 80-200 kDa (aorta) and 30-160 kDa (kidney) and a core protein size of 24 kDa or 22 kDa, respectively, was localized by immunohistochemistry to the basement membrane. Amino acid sequence analysis of tryptic peptides indicates that this small HS-PG is clearly distinct from perlecan and agrin.</p>
Contents:	<p>10 µg / 100 µg (lyophilized)</p> <p>Resuspend in 10 µl / 100 µl aqua bidest.</p>
Known applications:	<p>ELISA (less than 1 µg/ml)^{2,3,4}, Western Blot (1 µg/ml)², immunohistochemistry (cryosections, 1 µg/ml)^{2,3}</p> <p>This antibody has not been tested for use in all applications. This does not necessarily exclude its use for non-tested procedures. The stated dilutions are recommendations only. We suggest that the applicant titrates the antibody in his/her system using appropriate negative/positive controls.</p>
Store at:	<p>2-8 °C (lyophilized); - 20 °C (dissolved)</p> <p>Repeated thawing and freezing must be avoided</p>



**References:**

1. Stöcker G, Meyer HE, Wagener C and Greiling H (1991). Purification and N-terminal amino acid sequence of a chondroitin sulfate / dermatan sulfate proteoglycan isolated from intima / media preparations of human aorta. *Biochem J* **274**: 415-420.
2. Heintz B, Stöcker G, Rentz U, Melzer H, Mrowka C, Stickeler E, Sieberth HG, Greiling H, Haubeck HD (1995). Decreased glomerular basement membrane heparan sulfate proteoglycan in essential hypertension. *Hypertension* **25**: 399-407.
3. Stefanidis I, Heintz B, Stöcker G, Mrowka C, Sieberth HG, Haubeck HD (1996). Association between heparan sulfate proteoglycan excretion and proteinuria after renal transplantation. *J Am Soc Nephrol* **7**: 1-7.
4. Stöcker G, Stickeler E, Switalla S, Fischer DC, Greiling H, Haubeck HD (1997). Development of an enzyme immuno assay specific for a core protein epitope of a novel small basement membrane associated heparan sulphate proteoglycan from human kidney. *Eur J Clin Chem Clin Biochem* **35**: 95-99.

Last updated on: 22 April 2022

For research use only

Publishing research using AH1001? Please let us know so that we can cite your publication as a reference.

