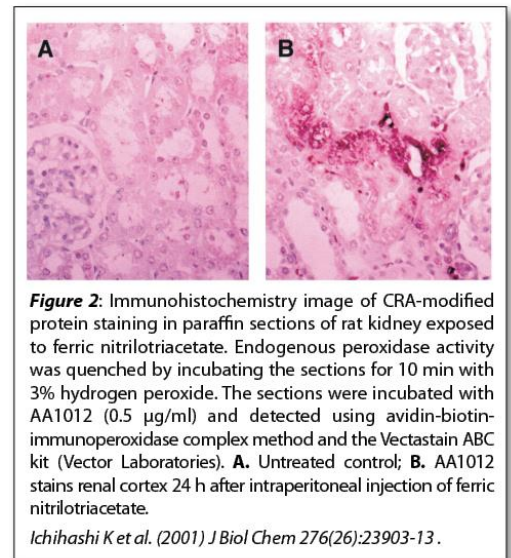
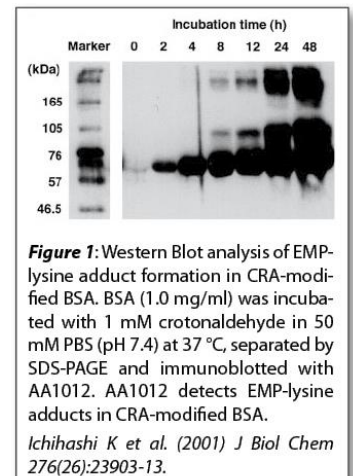




## Data Sheet

# CROTONALDEHYDE (CRA)-MODIFIED PROTEIN ANTIBODY, MONOCLONAL

<b>Catalog no.:</b>	AA1012.1
<b>Immunogen:</b>	Crotonaldehyde (CRA)-modified KLH
<b>Host:</b>	Mouse Balb/c
<b>Clone no.:</b>	82D3
<b>Isotype:</b>	IgG <sub>2b</sub> (lambda)
<b>Matrix:</b>	Protein A purified, 10 mM PBS, 0.1% NaN <sub>3</sub> , 0.5% BSA
<b>Specificity:</b>	CRA-modified protein, especially CRA-lysine adduct N <sup>ε</sup> -(5-ethyl-2-methylpyridinium) [EMP] lysine
<b>Contents:</b>	30 µg (frozen; 100 µg/ml)
<b>Known applications:</b>	Western Blot <sup>1</sup> , immunohistochemistry (paraffin sections, 0.5 – 1 µg/ml) <sup>1</sup>  This antibody has not been tested for use in all applications. This does not necessarily exclude its use in non-tested procedures. The stated dilutions are recommendations only. End users should determine optimal dilutions in their system using appropriate negative/positive controls.
<b>Store at:</b>	- 20 °C  Repeated thawing and freezing must be avoided
<b>References:</b>	1. Ichihashi K, Osawa T, Toyokuni S, Uchida K (2001). Endogenous formation of protein adducts with carcinogenic aldehydes: implications for oxidative stress. <i>J Biol Chem</i> <b>276</b> (26): 23903-23913.
<b>Last updated on:</b>	14 April 2022



For research use only

Publishing research using AA1012? Please let us know so that we can cite your publication as a reference.

