



Data Sheet

HUMAN CHROMOGRANIN B [CgB] (aa 406-417)

ANTIBODY, POLYCLONAL

Catalog no.:	AST1018.1 / AST1018.2
Immunogen:	Synthetic human CgB (aa 406-417) KLH-conjugated (CPRAYFMSDTREE) Underlined amino acids were substituted or added for technical reasons.
Synonyms:	Secretogranin-1, Chromogranin-B, CgB, Secretogranin I, Sgl
Swiss-Prot No:	P05060
Gene Information:	Gene Name: CHGB GeneID: 1114
Host:	Rabbit
Matrix:	Serum
Specificity:	Human CgB (aa 406-417) There was no cross reactivity detected with human CgB peptides (aa 1-16; 16-37; 153-167; 244-255; 259-270; 312-331; 420-432; 480-493; 506-517; 542-552; 555-565; 568-577; 580-593; 622-632; 647-657).
Contents:	20 µl / 100 µl (lyophilized) Resuspend in 20 µl / 100 µl aqua bidest.
Known applications:	RIA ² , Western Blot, immunohistochemistry (paraffin sections, 1:80-800) ¹ This antibody has not been tested for use in all applications. This does not necessarily exclude its use in non-tested procedures. The stated dilutions are recommendations only. End users should determine optimal dilutions in their system using appropriate negative/positive controls.
Store at:	2-8 °C (lyophilized); - 20 °C (dissolved) Repeated thawing and freezing must be avoided
References:	1. Portela-Gomes GM & Stridsberg M (2002) Region-specific antibodies to chromogranin B display various immunostaining patterns in human endocrine pancreas. <i>J. Histochem. Cytochem.</i> 50 : 1023-1030. 2. Stridsberg M, Eriksson B, Öberg K & Janson ET (2005) A panel of 13 region-specific radioimmunoassays for measurements of human chromogranin B. <i>Regul. Pept.</i> 125 : 193-199
Last updated on:	4 May 2022

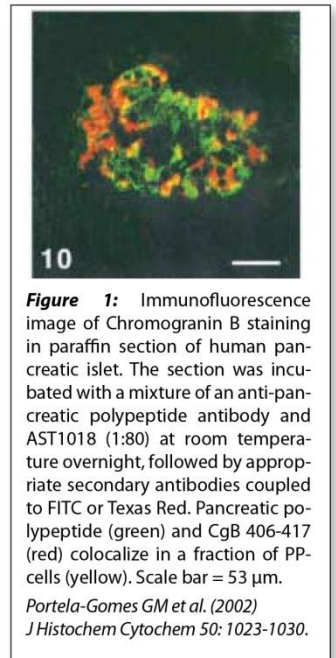
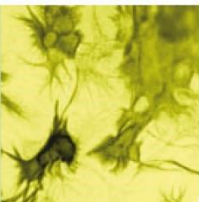


Figure 1: Immunofluorescence image of Chromogranin B staining in paraffin section of human pancreatic islet. The section was incubated with a mixture of an anti-pancreatic polypeptide antibody and AST1018 (1:80) at room temperature overnight, followed by appropriate secondary antibodies coupled to FITC or Texas Red. Pancreatic polypeptide (green) and CgB 406-417 (red) colocalize in a fraction of PP-cells (yellow). Scale bar = 53 µm.

Portela-Gomes GM et al. (2002)
J Histochem Cytochem 50: 1023-1030.



Antibodies



For research use only

Publishing research using AST1018? Please let us know so that we can cite your publication as a reference.



Immundiagnostik AG

Stubenwald-Allee 8a · 64625 Bensheim · Germany

Phone: +49 6251 70190-0 · Fax: +49 6251 70190-363 · dept.immunochemicals@immundiagnostik.com · www.immundiagnostik.com