

Data Sheet

HUMAN CHROMOGRANIN B [CgB] (aa 244-255)

ANTIBODY, POLYCLONAL

Catalog no.:	AST1015.1 / AST1015.2
Immunogen:	Synthetic human CgB (aa 244-255) KLH-conjugated (CYEEGEEEDATSEVD) Underlined amino acids were substituted or added for technical reasons.
Synonyms:	Secretogranin-1, Chromogranin-B, CgB, Secretogranin I, Sgl
Swiss-Prot No:	P05060
Gene Information:	Gene Name: CHGB GenelD: 1114
Host:	Rabbit
Matrix:	Serum
Specificity:	Human CgB (aa 244-255) There was no cross reactivity detected with human CgB peptides (aa 1-16; 16-37; 153-167; 259-270; 312-331; 406-417; 420-432; 480-493; 506-517; 542-552; 555-565; 568-577; 580-593; 622-632; 647-657).
Contents:	20 µl / 100 µl (lyophilized) Resuspend in 20 µl / 100 µl aqua bidest.
Known applications:	RIA ² , Western Blot, immunohistochemistry (paraffin sections, 1:160-3200) ^{1,3} This antibody has not been tested for use in all applications. This does not necessarily exclude its use in non-tested procedures. The stated dilutions are recommendations only. End users should determine optimal dilutions in their system using appropriate negative/positive controls.
Store at:	2-8 °C (lyophilized); - 20 °C (dissolved) Repeated thawing and freezing must be avoided
References:	<ol style="list-style-type: none"> 1. Portela-Gomes GM & Stridsberg M (2002) Region-specific antibodies to chromogranin B display various immunostaining patterns in human endocrine pancreas. <i>J. Histochem. Cytochem.</i> 50: 1023–1030. 2. Stridsberg M, Eriksson B, Öberg K & Janson ET (2005) A panel of 13 region-specific radioimmunoassays for measurements of human chromogranin B. <i>Regul. Pept.</i> 125: 193–199. 3. Portela-Gomes GM, Grimelius L & Stridsberg M (2010) Secretogranin III in human neuroendocrine tumours. A comparative immunohistochemical study with chromogranins A and B and secretogranin II. <i>Regul. Pept.</i> 165: 30–35.

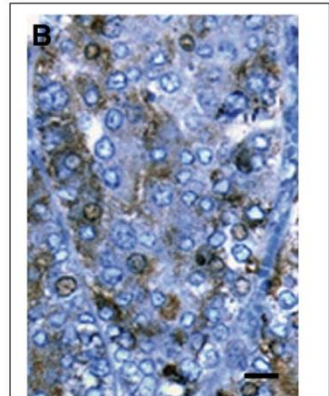
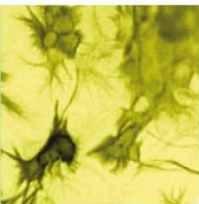
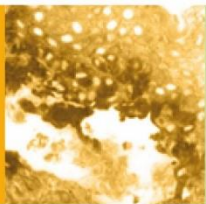


Figure 1: Immunohistochemistry image of Chromogranin B staining in paraffin section of human malignant pheochromocytoma. After antigen retrieval was performed using citrate buffer (pH 6.0) and a microwave, the section was incubated with AST1015 (1:3200) and detected using the indirect two-step dextran-polymer technique (DAKO). DAB was used as the chromogen. The sections were counterstained with Hematoxylin-eosin. B. AST1015 stains most cells faintly, while some cells show stronger staining. Scale bar = 15 µm.

Portela-Gomes GM et al. (2010)
Regul Pept 165: 30-35



Antibodies



Last updated on: 4 May 2022

For research use only

Publishing research using AST1015? Please let us know so that we can cite your publication as a reference.



Immundiagnostik AG

Stubenwald-Allee 8a · 64625 Bensheim · Germany

Phone: +49 6251 70190-0 · Fax: +49 6251 70190-363 · dept.immuochemicals@immundiagnostik.com · www.immundiagnostik.com