



Data Sheet

HUMAN CHROMOGRANIN A [CgA] (aa 361-372) ANTIBODY, POLYCLONAL

Catalog no.: AST1009.1 / AST1009.2
Immunogen: Synthetic human CgA (aa 361-372) KLH-conjugated (CRAYGFRGPGPQL)
 Underlined amino acids were substituted or added for technical reasons.

Synonyms: Pituitary secretory protein I, SP-I

Swiss-Prot No: P10645

Gene Information: Gene Name: CHGA

GeneID: 1113

Host: Rabbit

Matrix: Serum

Specificity: Human CgA (aa 361-372)

There was no cross reactivity detected with human CgA peptides (aa 1-17; 17-38; 63-76; 100-113; 116-130; 176-195; 238-247; 284-301; 324-337; 361-372; 375-384; 411-424), intact human CgB, insulin, glucagon, somatostatin (aa 1-14), or pancreatic polypeptide.

Contents: 20 µl / 100 µl (lyophilized)

Resuspend in 20 µl / 100 µl aqua bidest.

Known applications: RIA^{4,5}, Western Blot, immunohistochemistry (paraffin sections, 1:80-1000)^{1,2,3,4,5}

For staining of paraffin sections microwave antigen retrieval in citrate buffer pH 6.0 is recommended¹

This antibody has not been tested for use in all applications. This does not necessarily exclude its use in non-tested procedures. The stated dilutions are recommendations only. End users should determine optimal dilutions in their system using appropriate negative/positive controls.

Store at: 2-8 °C (lyophilized); -20 °C (dissolved)

Repeated thawing and freezing must be avoided

References:

- Portela-Gomes GM & Stridsberg M (2001) Selective processing of chromogranin A in the different islet cells in human pancreas. *J. Histochem. Cytochem.* **49**: 483-490.
- Portela-Gomes GM & Stridsberg M (2002) Chromogranin A in the human gastrointestinal tract: an immunocytochemical study with region-specific antibodies. *J. Histochem. Cytochem.* **50**: 1487-1492.
- Jin L, Zhang S, Bayliss J, Scheithauer B, Qian X, Kobayashi I, Stridsberg M & Lloyd R V (2003) Chromogranin a processing in human pituitary adenomas and carcinomas: analysis with region-specific antibodies. *Endocr. Pathol.* **14**: 37-48.

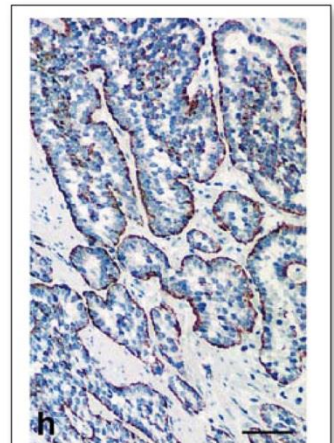
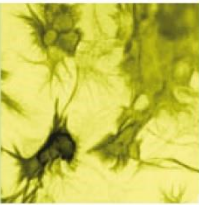
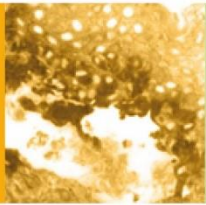


Figure 1: Immunohistochemistry image of Chromogranin A staining in paraffin section of human enterochromaffin-like tumor (ECLoma) Type III. After antigen retrieval with microwave treatment, sections were incubated overnight at 4 °C with AST1009. Staining was performed using the ABC technique with AEC as the chromogen. The sections were counterstained with Mayer's haematoxylin-eosin. AST1009 stains mainly the periphery of neoplastic nests. Scale bar = 30µm.

Tartaglia A et al. (2006) *Virchows Arch* 448: 399-406





4. Stridsberg M, Eriksson B, Öberg K & Janson ET (2004) A panel of 11 region-specific radioimmunoassays for measurements of human chromogranin A. *Regul. Pept.* **117**: 219–227.

5. Tartaglia A, Portela-Gomes GM, Öberg K, Vezzadini P, Foschini MP & Stridsberg M (2006) Chromogranin A in gastric neuroendocrine tumours: An immunohistochemical and biochemical study with region-specific antibodies. *Virchows Arch.* **448**: 399–406.

Last updated on: 28 April 2022

For research use only

Publishing research using AST1009? Please let us know so that we can cite your publication as a reference.

