

Data Sheet

HUMAN CHROMOGRANIN A [CgA] (aa 100-113) ANTIBODY, POLYCLONAL

Catalog no.:	AST1003.1 / AST1003.2
Immunogen:	Synthetic human CgA (aa 100-113) KLH-conjugated (<u>C</u> YKEAVEEPSSKDVME) <small>Underlined amino acids were substituted or added for technical reasons.</small>
Synonyms:	Pituitary secretory protein I, SP-I
Swiss-Prot No:	P10645
Gene Information:	Gene Name: CHGA GeneID: 1113
Host:	Rabbit
Matrix:	Serum
Specificity:	Human CgA (aa 100-113) There was no cross reactivity detected with human CgA peptides (aa 1-17; 17-38; 63-76; 116-130; 176-195; 238-247; 284-301; 324-337; 361-372; 375-384; 411-424).
Contents:	20 µl / 100 µl (lyophilized) Resuspend in 20 µl / 100 µl aqua bidest.
Known applications:	RIA ^{4,5} , Western Blot, immunohistochemistry (paraffin sections, 1:40-1000) ^{1,2,3,5} <small>This antibody has not been tested for use in all applications. This does not necessarily exclude its use in non-tested procedures. The stated dilutions are recommendations only. End users should determine optimal dilutions in their system using appropriate negative/positive controls.</small>
Store at:	2-8 °C (lyophilized); - 20 °C (dissolved) Repeated thawing and freezing must be avoided
References:	<ol style="list-style-type: none"> Portela-Gomes GM & Stridsberg M (2001) Selective processing of chromogranin A in the different islet cells in human pancreas. <i>J. Histochem. Cytochem.</i> 49: 483–490. Portela-Gomes GM & Stridsberg M (2002) Chromogranin A in the human gastrointestinal tract: an immunocytochemical study with region-specific antibodies. <i>J. Histochem. Cytochem.</i> 50: 1487–1492. Jin L, Zhang S, Bayliss J, Scheithauer B, Qian X, Kobayashi I, Stridsberg M & Lloyd R V (2003) Chromogranin a processing in human pituitary adenomas and carcinomas: analysis with region-specific antibodies. <i>Endocr. Pathol.</i> 14: 37–48. Stridsberg M, Eriksson B, Öberg K & Janson ET (2004) A panel of 11 region-specific radioimmunoassays for measurements of human chromogranin A. <i>Regul. Pept.</i> 117: 219–227.

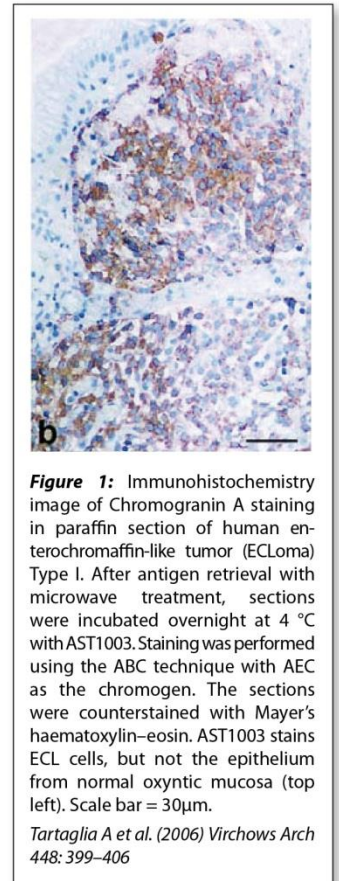
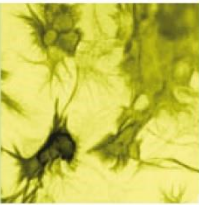
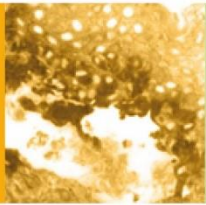


Figure 1: Immunohistochemistry image of Chromogranin A staining in paraffin section of human enterochromaffin-like tumor (ECLoma) Type I. After antigen retrieval with microwave treatment, sections were incubated overnight at 4 °C with AST1003. Staining was performed using the ABC technique with AEC as the chromogen. The sections were counterstained with Mayer's haematoxylin–eosin. AST1003 stains ECL cells, but not the epithelium from normal oxyntic mucosa (top left). Scale bar = 30µm.
Tartaglia A et al. (2006) Virchows Arch 448: 399–406





5. Tartaglia A, Portela-Gomes GM, Öberg K, Vezzadini P, Foschini MP & Stridsberg M (2006)
Chromogranin A in gastric neuroendocrine tumours: An immunohistochemical and biochemical study
with region-specific antibodies. *Virchows Arch.* **448**: 399–406.

Last updated on: 28 April 2022

For research use only

Publishing research using AST1003? Please let us know so that we can cite your publication as a reference.

