



Data Sheet

HUMAN CHROMOGRANIN A [CgA] (aa 116-130)

ANTIBODY, POLYCLONAL

Catalog no.:	AST1004.1 / AST1004.2
Immunogen:	Synthetic human CgA (aa 116-130) KLH-conjugated (EDSKEAEKSGEATDGYC) Underlined amino acids were substituted or added for technical reasons.
Synonyms:	Pituitary secretory protein I, SP-I
Swiss-Prot No:	P10645
Gene Information:	Gene Name: CHGA GeneID: 1113
Host:	Rabbit
Matrix:	Serum
Specificity:	Human CgA (aa 116-130) There was no cross reactivity detected with human CgA peptides (aa 1-17; 17-38; 63-76; 100-113; 176-195; 238-247; 284-301; 324-337; 361-372; 375-384; 411-424).
Contents:	20 µl / 100 µl (lyophilized) Resuspend in 20 µl / 100 µl aqua bidest.
Known applications:	RIA ^{5,6} , Western Blot, immunohistochemistry (paraffin sections, 1:80-1000) ^{1,2,3,4,6}

This antibody has not been tested for use in all applications. This does not necessarily exclude its use in non-tested procedures. The stated dilutions are recommendations only. End users should determine optimal dilutions in their system using appropriate negative/positive controls.

Store at:	2-8 °C (lyophilized); - 20 °C (dissolved) Repeated thawing and freezing must be avoided
------------------	--------------------------------------------------------------------------------------------

References:	<ol style="list-style-type: none"> Portela-Gomes GM & Stridsberg M (2001) Selective processing of chromogranin A in the different islet cells in human pancreas. <i>J. Histochem. Cytochem.</i> 49: 483-490. Portela-Gomes GM, Grimelius L, Johansson H, Wilander E & Stridsberg M (2001) Chromogranin A in human neuroendocrine tumors: an immunohistochemical study with region-specific antibodies. <i>Am. J. Surg. Pathol.</i> 25: 1261-1267. Portela-Gomes GM & Stridsberg M (2002) Chromogranin A in the human gastrointestinal tract: an immunocytochemical study with region-specific antibodies. <i>J. Histochem. Cytochem.</i> 50: 1487-1492. Jin L, Zhang S, Bayliss J, Scheithauer B, Qian X, Kobayashi I, Stridsberg M & Lloyd R V (2003) Chromogranin a processing in human pituitary adenomas and carcinomas: analysis with region-specific antibodies. <i>Endocr. Pathol.</i> 14: 37-48.
--------------------	------------------------------------------------------------------------------------------------------------------------------------------------------------------------------------------------------------------------------------------------------------------------------------------------------------------------------------------------------------------------------------------------------------------------------------------------------------------------------------------------------------------------------------------------------------------------------------------------------------------------------------------------------------------------------------------------------------------------------------------------------------------------------------------------------------------------------------------------------------------------------------------------------------------------------------------------------------------------------------------------

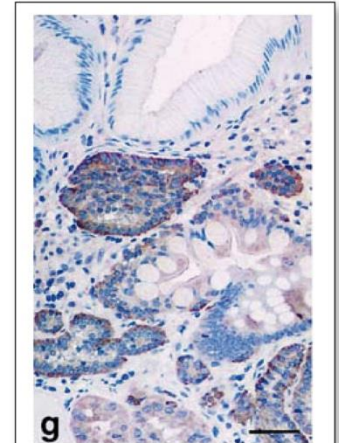
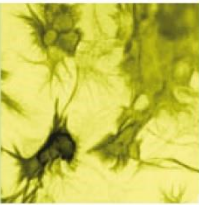
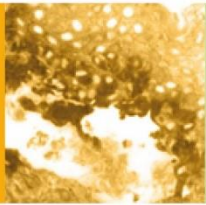


Figure 1: Immunohistochemistry image of Chromogranin A staining in paraffin section of human enterochromaffin-like tumor (ECLoma) Type I. After antigen retrieval with microwave treatment, sections were incubated overnight at 4 °C with AST1004 (1:800). Staining was performed using the ABC technique with AEC as the chromogen. The sections were counterstained with Mayer's haematoxylin-eosin. AST1004 stains mainly the periphery of the tumor nests. Scale bar = 30µm.

Tartaglia A et al. (2006) *Virchows Arch* 448: 399-406





5. Stridsberg M, Eriksson B, Öberg K & Janson ET (2004) A panel of 11 region-specific radioimmunoassays for measurements of human chromogranin A. *Regul. Pept.* **117**: 219–227.

6. Tartaglia A, Portela-Gomes GM, Öberg K, Vezzadini P, Foschini MP & Stridsberg M (2006) Chromogranin A in gastric neuroendocrine tumours: An immunohistochemical and biochemical study with region-specific antibodies. *Virchows Arch.* **448**: 399–406.

Last updated on: 28 April 2022

For research use only

Publishing research using AST1004? Please let us know so that we can cite your publication as a reference.

