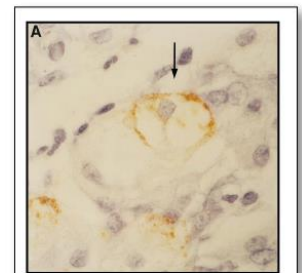


## Data Sheet

# HUMAN CHOLECYSTOKININ-RECEPTOR TYPE B [CCK-R] (aa 206-219)

## ANTIBODY, POLYCLONAL

<b>Catalog no.:</b>	AE1128.1 / AE1128.2
<b>Immunogen:</b>	Synthetic human CCK-R Type B (aa 206-219) polyLysine conjugated (VHRWPSARVRQTWS)
<b>Synonyms:</b>	Gastrin/cholecystokinin type B receptor, Cholecystokinin-2 receptor (CCK2-R)
<b>Swiss-Prot No:</b>	P32239
<b>Gene Information:</b>	Gene Name: CCKBR, CCKRB GenelD: 887
<b>Host:</b>	Rabbit
<b>Matrix:</b>	Serum
<b>Specificity:</b>	Human CCK-R Type B
<b>Contents:</b>	20 µl / 100 µl (lyophilized) Resuspend in 20 µl / 100 µl aqua bidest.
<b>Known applications:</b>	Western Blot (1:1000-3000) <sup>1</sup> , immunohistochemistry (paraffin sections, 1:500) <sup>1</sup>  This antibody has not been tested for use in all applications. This does not necessarily exclude its use for non-tested procedures. The stated dilutions are recommendations only. We suggest that the applicant titrates the antibody in his/her system using appropriate negative/positive controls.
<b>Store at:</b>	2-8 °C (lyophilized); - 20 °C (dissolved)  Repeated thawing and freezing must be avoided
<b>References:</b>	1. Kulaksiz H, Arnold R, Goke B, Maronde E, Meyer M, Fahrenholz F, Forssmann WG, Eissele R (2000). Expression and cell-specific localization of the cholecystokinin B/gastrin receptor in the human stomach. <i>Cell Tissue Res</i> <b>299</b> (2): 289-298.
<b>Last updated on:</b>	22 April 2022



**Figure 1:** Immunohistochemistry image of CCK-BR staining in paraffin section of human stomach biopsy. The section was incubated with AE1128 (1:500) and detected using ABC technique. DAB was used as the chromogen. **(A)** AE1128 stains most, but not all, gastric parietal cells at the basolateral cell membrane and in the cytoplasm.

Kulaksiz H et al. (2000) *Cell Tissue Res* 299(2):289-98.

### For research use only

**Publishing research using AE1128? Please let us know so that we can cite your publication as a reference.**

