

## Data Sheet

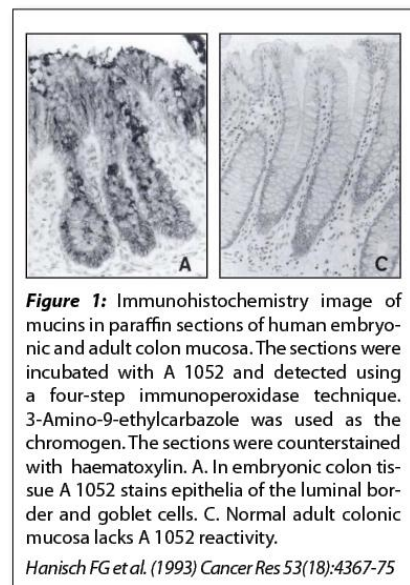
# ALPHA-3, 4-MONOFUCOSYLATED POLYLACTOSAMINOGLYCANS

## ANTIBODY, MONOCLONAL

<b>Catalog no.:</b>	A 1052.1 / A 1052.2
<b>Immunogen:</b>	Purified mucus glycoproteins (mucins) from human amniotic fluid
<b>Host:</b>	Mouse Balb/c
<b>Clone no.:</b>	FW6
<b>Isotype:</b>	IgM
<b>Matrix:</b>	Cell culture supernatant, purified, PBS pH 7.4
<b>Specificity:</b>	Alpha-3, 4-monofucosylated Polylactosaminoglycans on mucins, oncofetal antigen
<b>Contents:</b>	10 µg / 100 µg (lyophilized) Resuspend in 10 µl / 100 µl aqua bidest.
<b>Known applications:</b>	ELISA, Western Blot <sup>2</sup> , immunohistochemistry (paraffin sections) <sup>1, 2, 3</sup> , immunocytochemistry <sup>1</sup>  This antibody has not been tested for use in all applications. This does not necessarily exclude its use in non-tested procedures. The stated dilutions are recommendations only. End users should determine optimal dilutions in their system using appropriate negative/positive controls.
<b>Store at:</b>	2-8 °C (lyophilized); - 20 °C (dissolved)  Repeated thawing and freezing must be avoided

### References:

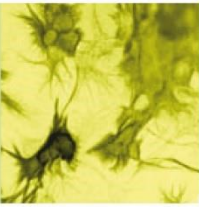
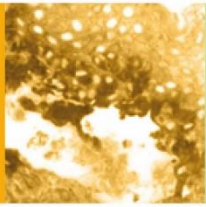
- Schwonzen M, Schmits R, Baldus SE, Vierbuchen M, Hanisch FG, Pfreundschuh M, Diehl V, Bara J, Uhlenbruck G (1992). Monoclonal antibody FW6 generated against a mucin-carbohydrate of human amniotic fluid recognises a colonic tumour-associated epitope. *Br J Cancer* **65**(4): 559-565.
- Hanisch FG, Heimbüchel G, Baldus SE, Uhlenbruck G, Schmits R, Pfreundschuh M, Schwonzen M, Vierbuchen M, Bara J, Peter-Katalinic J (1993). Monoclonal antibody FW6 defines an epitope on alpha 3/4-monofucosylated polylactosaminoglycans expressed by fetal and colon carcinoma-associated mucins. *Cancer Res* **53**(18): 4367-4375.



**Figure 1:** Immunohistochemistry image of mucins in paraffin sections of human embryonic and adult colon mucosa. The sections were incubated with A 1052 and detected using a four-step immunoperoxidase technique. 3-Amino-9-ethylcarbazole was used as the chromogen. The sections were counterstained with haematoxylin. A. In embryonic colon tissue A 1052 stains epithelia of the luminal border and goblet cells. C. Normal adult colonic mucosa lacks A 1052 reactivity.

Hanisch FG et al. (1993) *Cancer Res* 53(18):4367-75





3. Baldus SE, Vierbuchen M, Hanisch FG, Schwonzen M, Fischer R (1995). Expression of alpha-3/4-monofucosylated polylectosaminoglycan epitope, as defined by monoclonal antibody FW6, is a marker of the colorectal adenoma- carcinoma sequence. *Cancer* **76**(6): 954-960.

**Last updated on:** 16 March 2022

**For research use only**

**Publishing research using A 1052? Please let us know so that we can cite your publication as a reference.**

