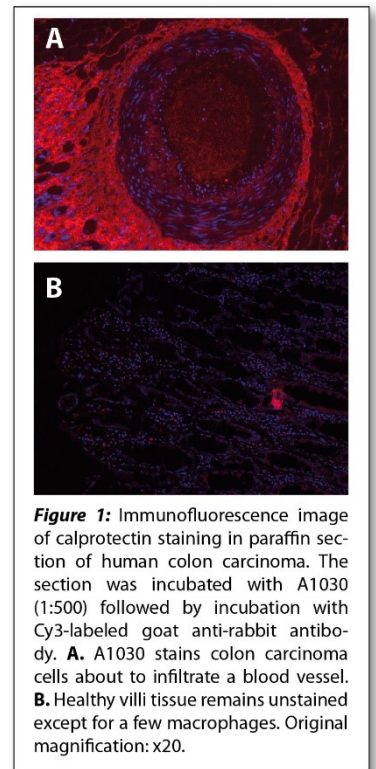


## Data Sheet

# HUMAN MRP8/14 (CALPROTECTIN, L1 PROTEIN)

## ANTIBODY, POLYCLONAL

<b>Catalog no.:</b>	A 1030.3 / A 1030.4
<b>Immunogen:</b>	Human MRP8 and MRP14 heterocomplex
<b>Synonyms:</b>	Calprotectin, S100A8/A9, Calgranulin A/B heterocomplex, L1 Protein
<b>Swiss-Prot No:</b>	P05109 and P06702
<b>Gene Information:</b>	Gene Name: S100A8, MRP8 and S100A9, MRP14 GeneID: 6279 and 6280
<b>Host:</b>	Rabbit
<b>Matrix:</b>	IgG, Protein G purified from serum; PBS pH 7.4
<b>Specificity:</b>	Human calprotectin
<b>Contents:</b>	10 µg / 100 µg (lyophilized) Resuspend in in 10 µl / 100 µl aqua bidest.
<b>Known applications:</b>	ELISA, Western Blot, immunohistochemistry (paraffin sections)  This antibody has not been tested for use in all applications. This does not necessarily exclude its use for non-tested procedures. The stated dilutions are recommendations only. We suggest that the applicant titrates the antibody in his/her system using appropriate negative/positive controls.
<b>Store at:</b>	2-8 °C (lyophilized); - 20 °C (dissolved) Repeated thawing and freezing must be avoided
<b>Last updated on:</b>	02 May 2024



**Figure 1:** Immunofluorescence image of calprotectin staining in paraffin section of human colon carcinoma. The section was incubated with A1030 (1:500) followed by incubation with Cy3-labeled goat anti-rabbit antibody. **A.** A1030 stains colon carcinoma cells about to infiltrate a blood vessel. **B.** Healthy villi tissue remains unstained except for a few macrophages. Original magnification: x20.

### For research use only

**Publishing research using A 1030? Please let us know so that we can cite your publication as a reference.**

