

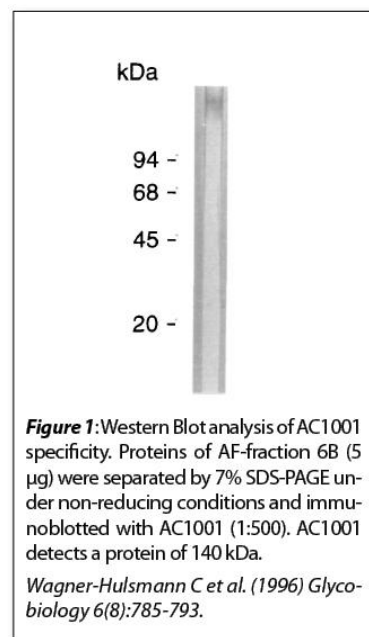


## Data Sheet

# AGGREGATION FACTOR (*GEODIA CYDONIUM*)

## ANTIBODY, MONOCLONAL

<b>Catalog no.:</b>	AC1001.1 / AC1001.2
<b>Immunogen:</b>	140 kDa polypeptide in the aggregation factor (AF) of <i>Geodia cydonium</i>
<b>Host:</b>	Mouse Balb/c
<b>Clone no.:</b>	1D2
<b>Isotype:</b>	IgG <sub>1</sub>
<b>Matrix:</b>	Cell culture supernatant, Protein G purified, 50 mM TRIS pH 7.4
<b>Specificity:</b>	Specific for the 140 kDa polypeptide in the aggregation factor of <i>Geodia cydonium</i>
<b>Contents:</b>	10 µg / 100 µg (lyophilized) Resuspend in 10 µl / 100 µl aqua bidest.
<b>Known applications:</b>	ELISA <sup>1</sup> , Western Blot (1:1000) <sup>1</sup> , immunoprecipitation, immunohistochemistry (resin sections, 1:100) <sup>1</sup>



This antibody has not been tested for use in all applications. This does not necessarily exclude its use for non-tested procedures. The stated dilutions are recommendations only. We suggest that the applicant titrates the antibody in his/her system using appropriate negative/positive controls.

**Store at:** 2-8 °C (lyophilized); - 20 °C (dissolved)  
Repeated thawing and freezing must be avoided

**References:** 1. Wagner-Hulsmann C, Bachinski N, Diehl-Seifert B, Blumbach B, Steffen R, Pancer Z, Muller WE (1996). A galectin links the aggregation factor to cells in the sponge (*Geodia cydonium*) system. *Glycobiology* 6(8): 785-793.

**Last updated on:** 16 December 2022

**For research use only**

**Publishing research using AC1001? Please let us know so that we can cite your publication as a reference.**

