

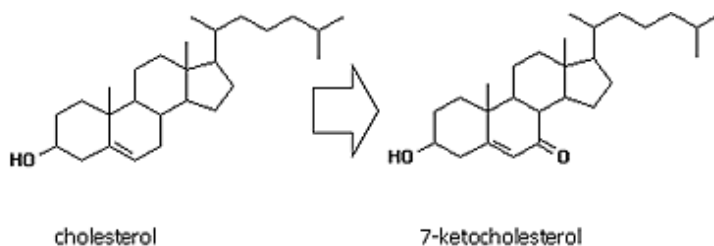
## Data Sheet

# 7-KETOCHOLESTEROL (7-KC)

## ANTIBODY, MONOCLONAL

<b>Catalog no.:</b>	AA1016.1 / AA1016.2
<b>Immunogen:</b>	7-Ketocholesterol (7-KC)-modified KLH
<b>Host:</b>	Mouse
<b>Clone no.:</b>	35A
<b>Isotype:</b>	IgG <sub>1</sub> kappa
<b>Matrix:</b>	Protein A purified, 10mM PBS, 0.1% NaN <sub>3</sub> , 0.5% BSA
<b>Specificity:</b>	7-Ketocholesterol

No cross reactivity was obtained with cholesterol; 7 $\beta$ -hydroxycholesterol; cholesterol-3 $\beta$ ,5 $\alpha$ ,6 $\beta$ -triol; cholesterol-5 $\beta$ ,6 $\beta$ -epoxide; cholesterol-5 $\alpha$ ,6 $\alpha$ -epoxide; 25-hydroxycholesterol.



<b>Contents:</b>	20 $\mu$ g / 100 $\mu$ g (frozen; 1 mg/ml)
<b>Known applications:</b>	Immunohistochemistry (cryosections, 5-10 $\mu$ g/ml). Not applicable to paraffin sections.  This antibody has not been tested for use in all applications. This does not necessarily exclude its use in non-tested procedures. The stated dilutions are recommendations only. End users should determine optimal dilutions in their system using appropriate negative/positive controls.
<b>Store at:</b>	- 20 $^{\circ}$ C  Repeated thawing and freezing must be avoided
<b>Last updated on:</b>	14 April 2022

### For research use only

**Publishing research using AA1016? Please let us know so that we can cite your publication as a reference.**

